

The Net

The Magazine of Priestfield Parish Church, Edinburgh
Living in the Way of Jesus



Web: <http://priestfield.org.uk>

Minister: Rev Donald Scott



Dear friends,

What a year it's been! An avid news watcher I know was telling me that it's become difficult to turn on the TV for fear that even worse news might spill out. Of course, turning it on also hikes the spinning wheel on the leccy meter, so definitely to be avoided!

It seems barely credible that the 21st century, which was supposed to give us jet packs and hover cars, has instead plunged us into levels of poverty not seen for a generation or more.

No wonder many people are nervous about celebrating Christmas.

But hold on!

Christmas is the season of God breaking into our lives, as one of us.

The season where we tell the stories of ordinary people being surprised by God's love.

The season where the rich and powerful are humbled in the words of Mary's song, The Magnificat.

The first Christmas was about new hope and a new way of imagining God.

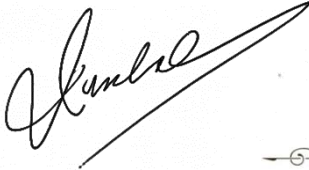
Perhaps, the birth of the Christ child is exactly what we need to celebrate in the midst of sabre-rattling, inflation and fear.

There's a lovely carol set to the tune Scarlet Ribbons. It begins:

*Who would think that what was needed
To transform and save the earth
Might not be a plan or army,
Proud in purpose, proved in worth?
Who would think, despite derision,
That a child should lead the way?
God surprises earth with heaven,
Coming here on Christmas Day.*

May you have a happy and blessed Christmas.

Your friend,

A handwritten signature in cursive script, appearing to read "Kumbe", written in black ink.

~ Priestfield Church ~
Advent and Christmas Services 2022

Sunday 4 December

10:30 am Advent Communion – a time to prepare for Christmas
[This is a shared service at Craigmillar Park Church]

Sunday 11 December

10:30 am Third Sunday in Advent Morning Service
7:30 pm An evening of Advent and Christmas music
[This concert is at Mayfield Salisbury Church]

Monday 12 December

5:30 pm Prestonfield Christmas Tree at Prestonfield Avenue
*Come and join the local community at the switch-on
of the lights*

Sunday 18 December

10:30 am A service of Lessons and Carols
*Everyone welcome – come along and bring
your friends*

Saturday 24 December

4.30 pm Christmas Eve Family Service
*Come with the children to sing, hear a story,
make a Christingle to take home, and enjoy
refreshments together*



11.15 pm Watchnight Service
With coffee and mince pies from 10.45 pm

Sunday 25 December

10.30 am Christmas Day Celebration

[This is a shared service at Mayfield Salisbury Church]

Bring a favourite present and tell us about it

Sunday 1 January

10.30 am New Year's Day

Recalling the year past and looking forward to the year ahead

[This is a shared service at Priestfield Church]



~ Southside Guilds Together ~

This Guild has made a good start with interesting speakers. We have been meeting in Craigmillar Park Church Hall on the first Tuesday of the month at 2pm. We have enjoyed the company of members from five different churches: Craigmillar Park, Marchmont St Giles, Mayfield Salisbury, Priestfield and Reid Memorial.

At November's meeting, Kevin Simpson, the CEO of the Scottish charity Malawi Fruits, told us about the charity's work with their partners in Malawi to establish and grow sustainable community businesses in the north of the country. He explained that they work with a three-stage development programme:

- supporting farmers to grow a cash crop, often for the first time
- irrigating the land so the farmers can get two or more crops per year
- providing crop processing facilities to add value to the crops

On 6th December we are hosting the Edinburgh Guilds Together meeting, where Joanne Brown, the newly appointed Development Worker at the National Guild, will be our speaker.

December 13th is our Christmas Party.

**Everyone is most welcome
at any of our meetings!**

Helen Douglas



~ Church Flower Rota ~



Many thanks to all who have contributed, arranged and delivered the church flowers in the past year. Your kindness and thoughtfulness is much appreciated by the church, and by all who receive.

June and I receive cards and telephone calls, saying how much it means to know their friends are thinking of them, whether for a special birthday, bereavement, or someone needing a little care.

We have a yearly rota for the flowers. If anyone would be willing to contribute, arrange or deliver, please contact either June or myself for information. We would be very happy to chat.

*Carole Stiff
June Henderson*



127th Brownies have had a great term, with our highlights being our trip to the Gang Show and bowling. We are very excited about our upcoming coffee morning - please note the slight change in date to Saturday 10th December. We look forward to seeing you there.

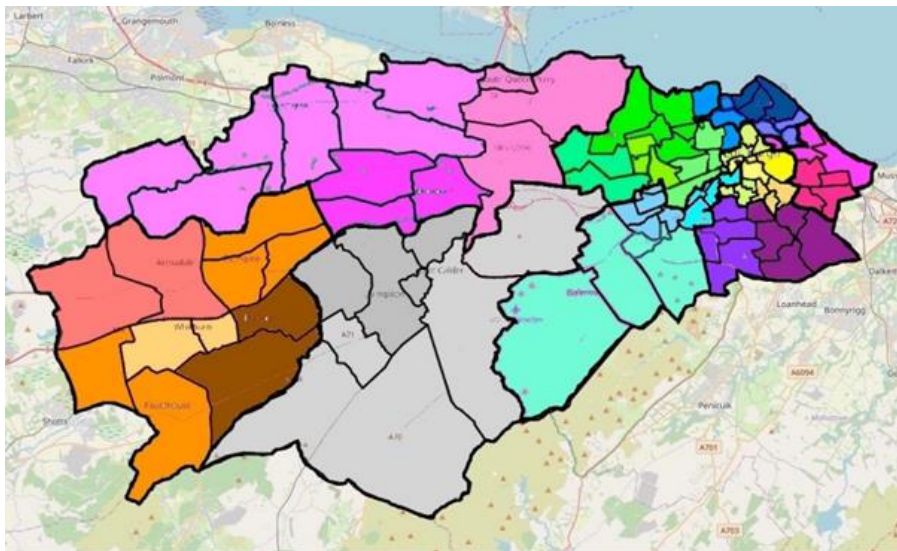
We have a couple of spaces for new brownies in January so please get in touch if you have any questions –

127thedinburghbrownies@gmail.com

Kind Regards,
Amy



Presbytery Mission Plan: an Update



Edinburgh and West Lothian Presbytery

Since I reported, in the April and September issues of ***The Net***, things have moved on.

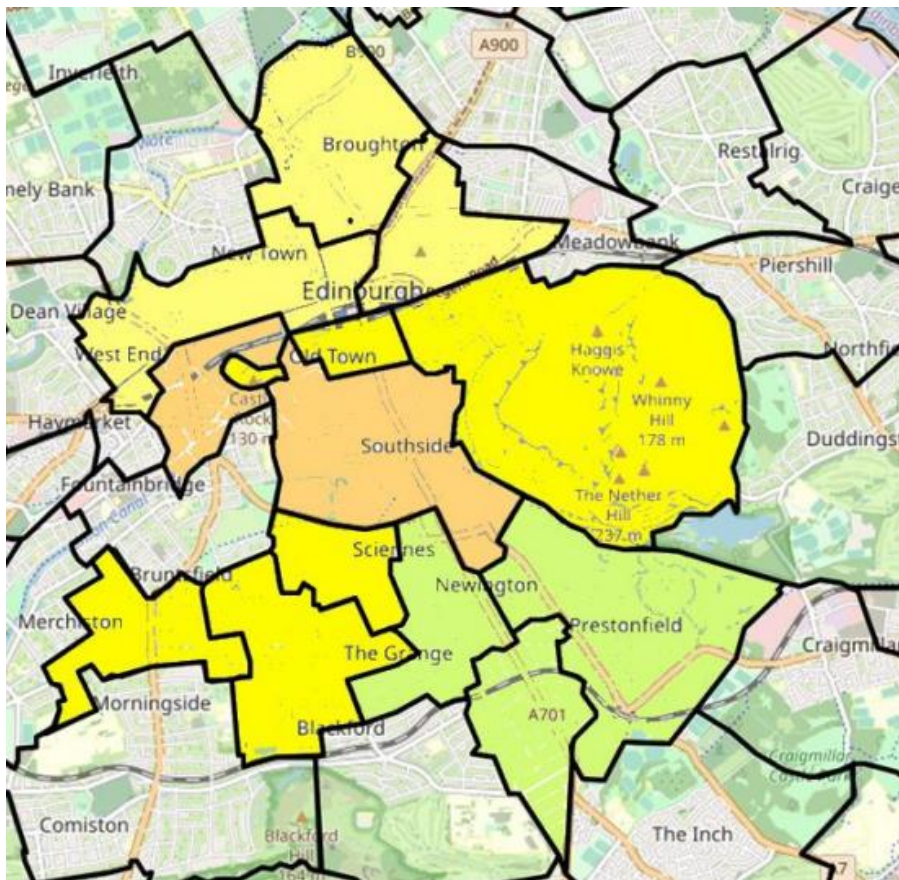
Over the summer and into the Autumn, Presbytery's Deployment group has been hard at work consulting with congregational representatives across the whole new Presbytery of Edinburgh and West Lothian. This has been a substantial piece of work ensuring that views were heard and, where possible, incorporated into the Plan. Regular re-drafts were published as this development work progressed.

This work culminated in mid-November in the Deployment Group recommending its 'final' plan to Presbytery for approval. It is a tribute to the Deployment Group that although there were a number of arguments against specific elements of the Plan, Presbytery approved the document by 158 votes for to only 5 against. We were also on our way home before 9:00pm!

So, what does this mean for us here in Newington?

The first thing to note is that we will be part of a **Mission District** covering Central Edinburgh from Broughton in the North to Cameron

Toll in the South and from Merchiston in the West to Arthur's Seat in the East.



Edinburgh Mission District B - Central

Mission Districts are a relatively new concept and will involve working together across parish boundaries to build relationships and provide *'a network of connections that are large enough to be supportive and yet small enough to allow personal contacts. While the formal structures of mission districts and their formal relationship to the wider Presbytery require more detailed proposals, the importance of creating and nurturing local partnerships for the sake of effective mission is 'exciting', to quote comments made by some congregations. Such mission districts are important within a presbytery as diverse as the Presbytery of Edinburgh and West Lothian, spanning more than 40 miles from east to west.'*

The second thing to note is that the approved Plan, as far as we locally are concerned, remains substantially as it was at the start of the process. Here is an extract from the Plan.

*'5. **Craigmillar Park, Mayfield Salisbury and Priestfield** are being asked to work together in a Union, structured as a Team Ministry as set out in the PMPA: Presbytery Mission Plan Act (Act VIII/2021). It will be served by 1 Full Time Minister of Word and Sacrament (FTMWS) and 1 Pioneer FTMWS. This will be supported by local staff (local youth worker, pastoral worker). A thorough knowledge of the area has already established mission priorities: pastoral care, students, charitable engagement, foodbank, listening service, worship experimentation, recovery cafe, pilgrimage and eco-priorities. From this base, these congregations will pursue fresh expressions of church, possibly focussed on students and artistic expression and perhaps working with Greyfriars Charteris and university chaplaincy. A building may be renovated as a hub for pioneer ministry... Southside Faith Care, supporting the elderly, will balance work with families through established programmes and a youth worker. Work with Newington Churches Together will continue.*

'Buildings: Mayfield Salisbury is an excellent complex for mission and should be designated 'A' (retain). Craigmillar Park and Priestfield are relatively close and thus retaining both may not be the best use of missional resources. It is proposed that both Craigmillar Park and Priestfield be designated 'B' (release) in order to begin careful consideration regarding not just 'the well-equipped space in the right place' but the mission ideas mooted above. A choice should be made by 30 June 2024, with a release date of 30 June 2025, at which time an annual review can designate the other 'A' as appropriate.'

What happens next? In brief, three things...

1. The acting Presbytery Clerk will forward the Presbytery Mission Plan to the Church of Scotland group tasked with oversight of the process, at 121 George Street, for its approval and sign-off.
2. There will be a congregational meeting after the service on Sunday 11 December to explain the proposals and answer any questions.
3. Our office bearers will increasingly work together with those at Craigmillar Park and Mayfield Salisbury to ensure that

there is a smooth transition to the new arrangements and that Mission is kept at the centre of things.

So, as I said previously, these are exciting and challenging times, so do please remember all those involved in your prayers.

Barry Cross
Session Clerk



Southside FAITH CARE



Southside FAITH CARE is a new organisation formed by local churches in the southside of Edinburgh with a shared vision of working together to support older people living in our community.

Craigmillar Park Marchmont St Giles Mayfield Salisbury
Morningside United Priestfield St Catherine's Argyle Reid Memorial

The above church communities, represented within Southside Faith Care, are already engaging successfully in a large range of initiatives alongside older people. However, the scoping exercise they undertook together has demonstrated the opportunities to provide better and more integrated care in the local community. The Covid pandemic and how we think about life have accelerated the rate of social isolation and loneliness and weakened community resilience.

It has become clear that the unique situation of these churches is their network of relationships and understanding of the individuals who are part of the church community. The community leaders interviewed have great sensitivity and awareness for the complex and specific needs of the people they work with. Their knowledge and care is invaluable in communities for more vulnerable people.

There is great potential for rebuilding community resilience, providing opportunities for individuals struggling with loneliness, addressing social isolation, collaborating with other local initiatives and developing the work of current groups. Going forward, we should aim to address the gaps in existing provision whilst being alert to duplication of what is currently available.

These are the conclusions of the report from the consultant some of you talked to as she went about her research, and we thank you all warmly for your willingness to help. You can find the full report at www.mayfieldsalisbury.org It's short and very readable! More importantly, you have been heard. They are quite comforting words and they may reinforce what we already know. Our reality! But it is not the reality for many.

In essence, **Southside Faith Care has a vision that we build a society where every older person is enabled to have the care and support to live the life they choose.** For each of us, positive physical and mental health has an impact on how we are a part of our community. Evidence shows that those who have access to good social networks and support are more resilient and likely to recover when unwell. If, like me, you resist the "older" label, then perhaps we are looking for ways to kick away the stereotypes and images, grin instead of grimace when the knees creak, and just get on with it.

However, as members of a faith community we are very fortunate because we have opportunities on our doorstep to enable us to live the lives we choose. Armed with the evidence you have provided, we are challenged as Southside Faith Care to widen our reach and find ways of working together. As part of the process, we are becoming an independent charity.

We have secured most of the funding we need to establish a hub that will operate across the southside, bringing on new projects and supporting existing ones, all the while listening to what you are telling us. You have asked for exercise classes; for information about many topics; help with the dreaded IT; opportunities to sing; a drop-in place to meet and chat; a listening ear; coffee and chocolate biscuits; home security advice; day trips; and much more.

The Tor Christian Foundation has awarded to fully fund year 1 (£100,400), with future funding for years 2 and 3, dependent on 50%

of costs being contributed/raised by the churches, so Tor would fund £37,870 for year 2 and £39,665 for year 3.

We are working on it so watch this space!



35th Braid Cub Scout Pack

Cubs continue to take part in a busy and active programme. We currently have 21 Cubs, with a group due to move up to Scouts soon. Over the past two years, we've held a mix of Zoom meetings, outdoor meetings in the Church garden and Holyrood Park. We returned to a more normal programme at Easter.



Since coming back after summer, we've been working on our Teamwork and Skills Challenges. Cubs enjoyed an evening at Bonaly Scout Centre in August, taking part in grass sledging and the aerial runway. Our evening at Holyrood Park in September gave us the chance for den building and games, as well as taking in the sunset. We

met together with the Beavers for our film night before the October half term.

Cubs chose the Chef badge to complete earlier on this term and enjoyed preparing pizzas from scratch and chocolate crispies. There were lots of different costumes on display for our Hallowe'en party, as well as crafts and games.

At the time of writing, we're looking ahead to our first night away since March 2020 with a sleepover at Penicuik Scout Hall and our end of term trip trampolining.



Andrew, Laura and Dorin

—❖—

Angels at Knitting-Together!

KnittingTogether! meets in the afternoon on alternate Thursdays. Some knitting and sewing goes on and we also enjoy a really good chat. There are many interesting stories and experiences to hear.



Lately, we have been knitting small angels. A short time before Christmas we will put them on the railings outside Church. They will have a small label fixed to them with a verse from the Christmas story and Church contact details. Also, an invitation to take an angel away.

We have done this for a number of years and are delighted by the way they do disappear. This is another way of sharing 'blessing' with our local community, in the same way as giving away tins of sweets to groups in the area.

Anyone is welcome to come along to KnittingTogether!

Next dates we gather are: Thursday 8th December and Thursday 22nd December.



We have had three Messy Church events over the Autumn-time. The last one was on Saturday 26th November. As the date was the day before Advent, we launched into seeing what people who were around at the time Jesus was born could tell us about what happened to them.



We then thought about what we might see, think and say if we had been there. There was a good crowd of us and we enjoyed making things, songs, party food and a snowball fight at the end. It was great fun with a message!

On **Christmas Eve** the **Christingle Service at 4.30pm** is an event Messy Church families can go to, together with everyone else.

In the New Year the **dates for Messy Church** will be



Saturday 28th January 2023

Saturday 25th February

Saturday 25th March

**To find out what is happening,
look out on Facebook or the website!**



~ Christingle 2022 ~

Christmas Eve Family Service

Saturday 24 December

at 4.30pm

Come with the children to sing, hear a story, make a Christingle to take home, and enjoy refreshments together



You are invited to...

*Prestonfield's
Tree Lighting*

**Monday
12 December
at 5.30pm**

in the
Memorial Garden
at the top of
Prestonfield Avenue



Photo: The Parish Church of St Andrew, Prestonfield, Edinburgh, 2014

Join us for . . .

*A Service of
Lessons and Carols*

**Sunday 18 December
at 10.30am**

**Come along and
bring your friends
Everyone welcome**